



bioauxilium

BETTER TOOLS. REAL DISCOVERIES.

NEW PRODUCTS!

THUNDER™ TR-FRET Human Cytokine Assay Kits

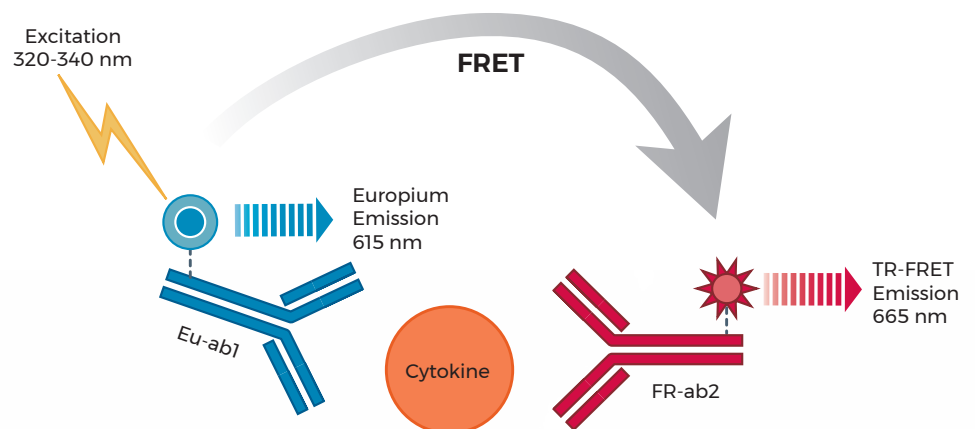
HIGH QUALITY, HIGH PERFORMANCE, RELIABLE, AFFORDABLE

Bioauxilium has launched new Human Cytokine Assay Kits based on its highly sensitive, robust, and cost-effective THUNDER™ TR-FRET technology platform. These cell-based assays are designed to quantitate key human cytokines in cell supernatants in a simple, rapid, reproducible, and consistent manner. They offer a real alternative to cumbersome ELISA and other expensive TR-FRET technologies.

KIT CONTENTS

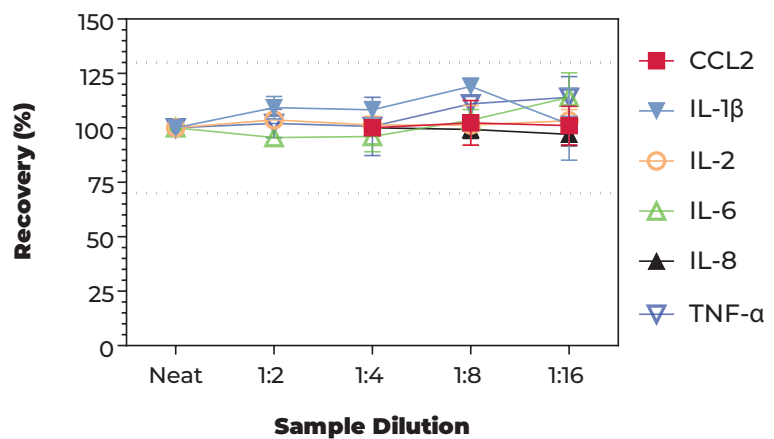
- Europium-labeled antibody
- Far-red labeled antibody
- Optimized Assay Buffer
- Detailed assay protocol
- Comprehensive validation data

THUNDER™ TR-FRET technology



PARALLELISM

Cell culture supernatants from stimulated cells were serially diluted with culture medium and assayed for six human cytokines. Recovery values between 86-124% of the neat sample demonstrate assay parallelism.



KEY ADVANTAGES

SUPERIOR PERFORMANCE	Use of high-quality antibody pairs specifically selected for TR-FRET combined with optimally formulated assay buffers for optimal performance and reproducible results.
RIGOROUS VALIDATION	Includes sensitivity, intra- and inter-assay precision, recovery, dilutional linearity, and supernatant samples, as well as lot-to-lot consistency and kit stability.
STRICT MANUFACTURING	Rigorous quality control testing is done on each kit component and each complete kit to make sure sensitivity, background, and signal remain consistent between kit lots.
AFFORDABLE	The most cost-effective TR-FRET immunoassay kits on the market.
OUTSTANDING TECHNICAL SUPPORT	Get timely and useful technical support from the same scientists that developed and validated the assay.

ORDERING INFORMATION

PRODUCT

KIT SIZE¹

Bulk quantities and lot reservation available for all kits.

	100 points	500 points	2 500 points	5 000 points	10 000 points	Required standard ²
CCL2/MCP1	KIT-CCL2-100	KIT-CCL2-500	KIT-CCL2-2500	KIT-CCL2-5000	KIT-CCL2-10000	R&D Systems® 279-MC
NEW CCL4/MIP-1β	KIT-CCL4-100	KIT-CCL4-500	KIT-CCL4-2500	KIT-CCL4-5000	KIT-CCL4-10000	R&D Systems® 271-BME
NEW GM-CSF	KIT-GMCSF-100	KIT-GMCSF-500	KIT-GMCSF-2500	KIT-GMCSF-5000	KIT-GMCSF-10000	R&D Systems® 7954-GM
IFN _γ	KIT-IFNG-100	KIT-IFNG-500	KIT-IFNG-2500	KIT-IFNG-5000	KIT-IFNG-10000	R&D Systems® 285-IF-100
IL-1β	KIT-IL1B-100	KIT-IL1B-500	KIT-IL1B-2500	KIT-IL1B-5000	KIT-IL1B-10000	R&D Systems® 201-LB
IL-2	KIT-IL2-100	KIT-IL2-500	KIT-IL2-2500	KIT-IL2-5000	KIT-IL2-10000	R&D Systems® 202-IL
IL-6	KIT-IL6-100	KIT-IL6-500	KIT-IL6-2500	KIT-IL6-5000	KIT-IL6-10000	R&D Systems® CYT-213
IL-8	KIT-IL8-100	KIT-IL8-500	KIT-IL8-2500	KIT-IL8-5000	KIT-IL8-10000	R&D Systems® CHM-327
NEW IL-10	KIT-IL10-100	KIT-IL10-500	KIT-IL10-2500	KIT-IL10-5000	KIT-IL10-10000	R&D Systems® 217-IL
IL-11	KIT-IL11-100	KIT-IL11-500	KIT-IL11-2500	KIT-IL11-5000	KIT-IL11-10000	R&D Systems® 200-11
IL-12 p40	KIT-IL12-100	KIT-IL12-500	KIT-IL12-2500	KIT-IL12-5000	KIT-IL12-10000	R&D Systems® 309-IL
NEW IL-12 p70	KIT-IL12P70-100	KIT-IL12P70-500	KIT-IL12P70-2500	KIT-IL12P70-5000	KIT-IL12P70-10000	R&D Systems® 219-IL
IL-17A	KIT-IL17A-100	KIT-IL17A-500	KIT-IL17A-2500	KIT-IL17A-5000	KIT-IL17A-10000	R&D Systems® 317-ILB
NEW IL-18	KIT-IL18-100	KIT-IL18-500	KIT-IL18-2500	KIT-IL18-5000	KIT-IL18-10000	R&D Systems® 9124-IL
TNF _α	KIT-TNFA-100	KIT-TNFA-500	KIT-TNFA-2500	KIT-TNFA-5000	KIT-TNFA-10000	R&D Systems® 210-TA

¹A point is an assay well; based on a total assay volume of 20 µL in a low-volume 384-well plate.

²The standard is not included in the kit.

All products are available globally through our network of authorized distributors.



bioauxilium

CUSTOM ANTIBODY LABELING AND ASSAY DEVELOPMENT

Prefer to develop your own TR-FRET assay?

We can label your antibodies with our proprietary donor and acceptor fluorophores and develop a custom assay as per your specifications.

Contact us for a customized quote at info@bioauxilium.com

7171 Frederick-Banting Street, Montréal (Québec) H4S 1Z9 CANADA bioauxilium.com 1-866-610-6933 x 103